

(Black unknown) vs (White unknown)

(Date unknown)

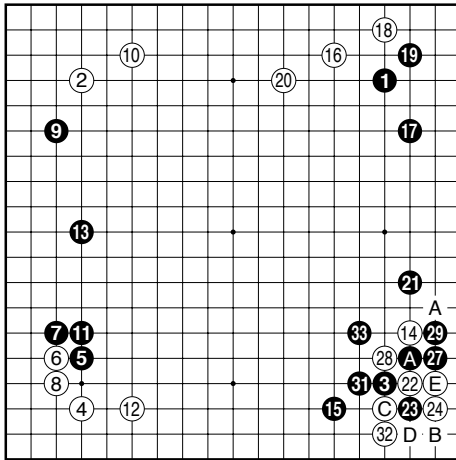


Figure 1 (1-33)

White 24 A and B are the main variation C is a bit slow as white gets settled easily D also lets white get settled easily

Black 33 kind of joseki, but black does not like it as white lives in sente and has threats outside. Additionally A is left for the end game

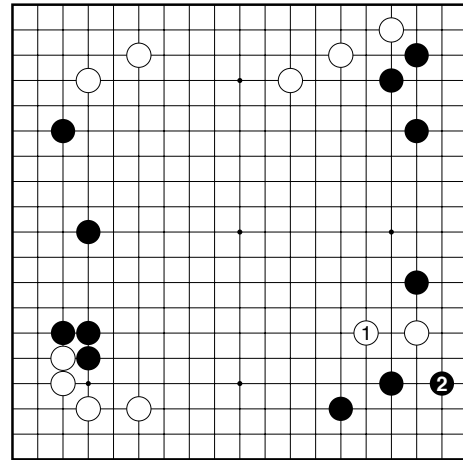


Diagram 2 (1-2)

Black 2 no base, a bit heavy

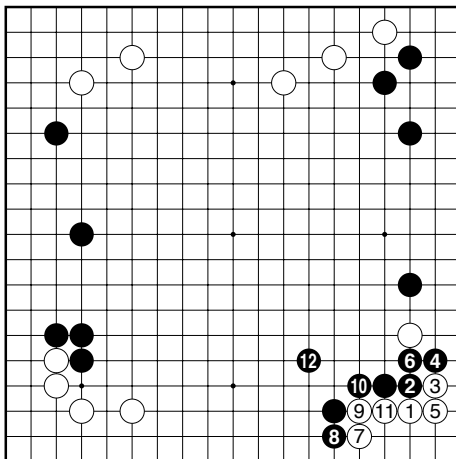


Diagram 1 (1-12)

Black 12 black is very strong outside, the choice between this invasion and the attachment at A depends on taste and the surroundings

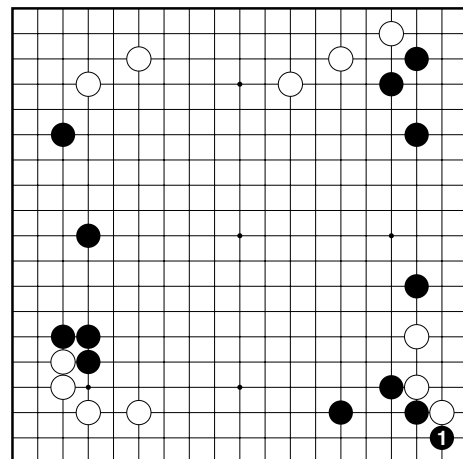


Diagram 3 (1)

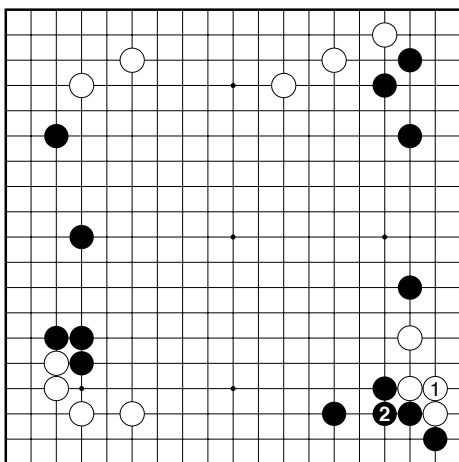


Diagram 9 (1-2)

Black 2 if white connects, black connects... heavy for white

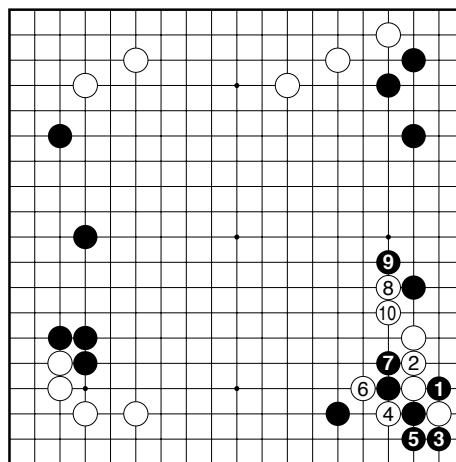


Diagram 11 (1-10)

White 10 lots of possibilities for white

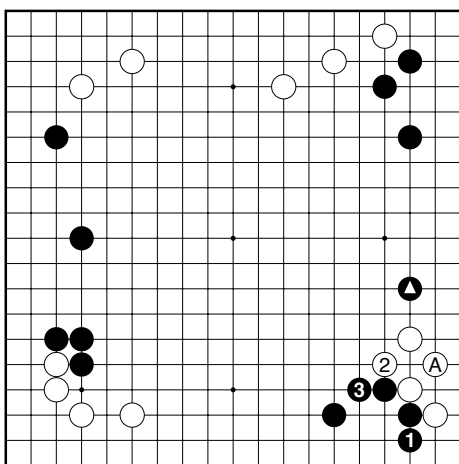


Diagram 10 (1-3)

Black 3 not too bad, but a bit a pity... black wanted to attack but just answered... white can tenuki now (ko) or play A

White 4 the marked stone is not attacking

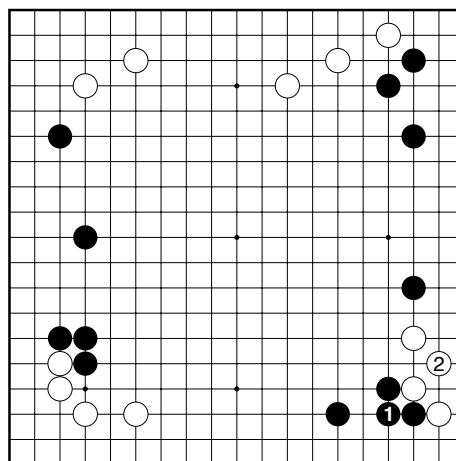


Diagram 12 (1-2)

White 2 old joseki, but white is secure and settled

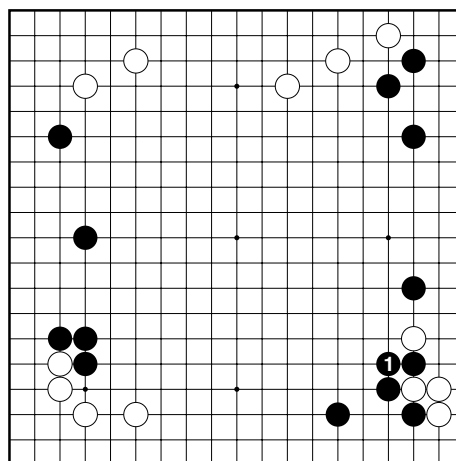


Diagram 13 (1)

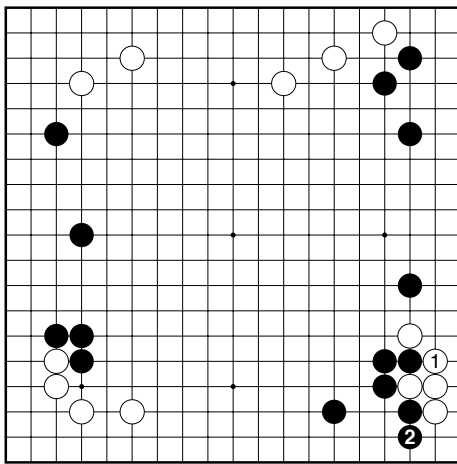


Diagram 14 (1-2)

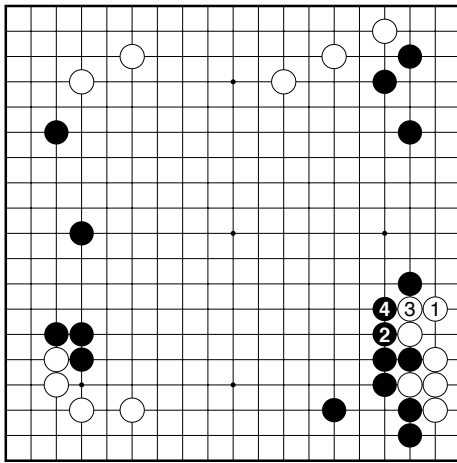


Diagram 15 (1-4)

Black 4 white is alive, but is is painful to live so small and give black a nice wall

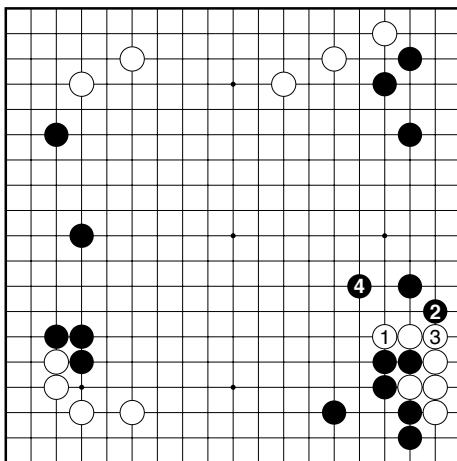


Diagram 16 (1-4)

Black 4 sometimes ok... if white has stones on the upper side, for example

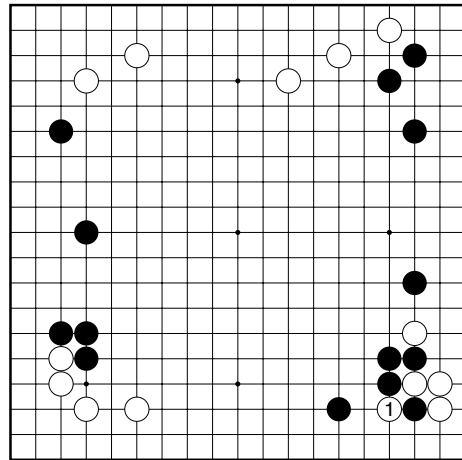


Diagram 17 (1)

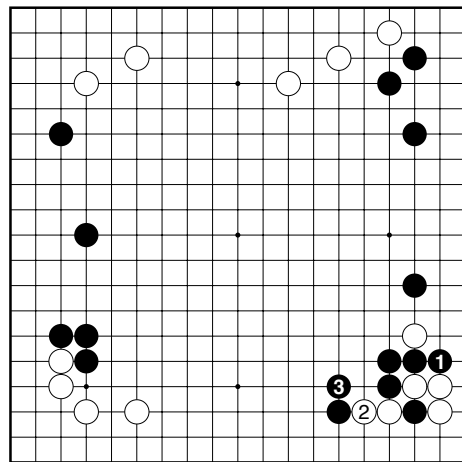


Diagram 18 (1-3)

Black 3 white is alive

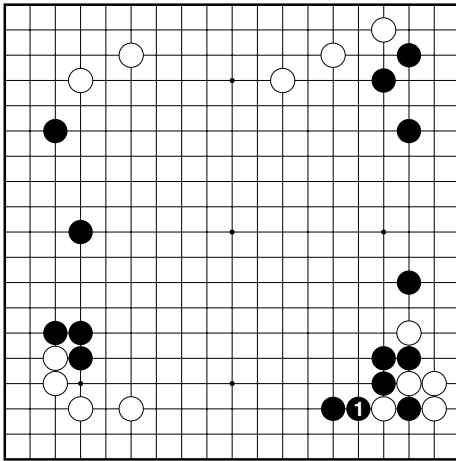


Diagram 19 (1)

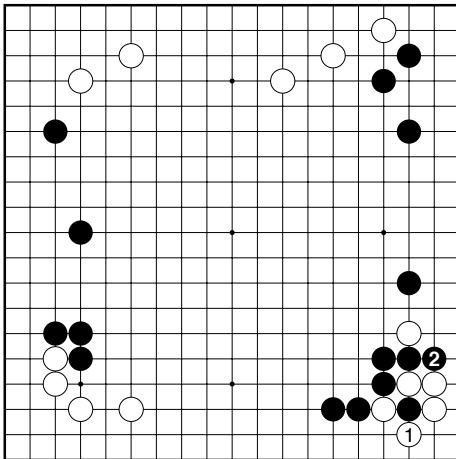


Diagram 20 (1-2)

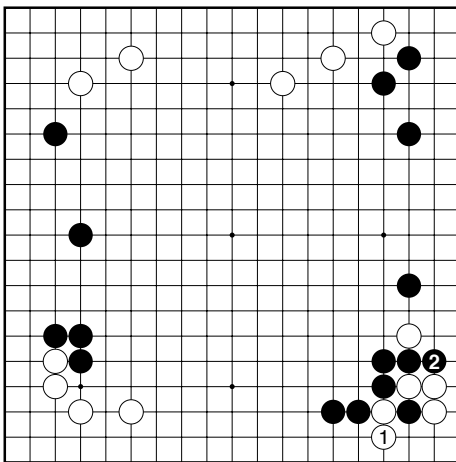


Diagram 21 (1-2)

Black 2 still gote for black, so...

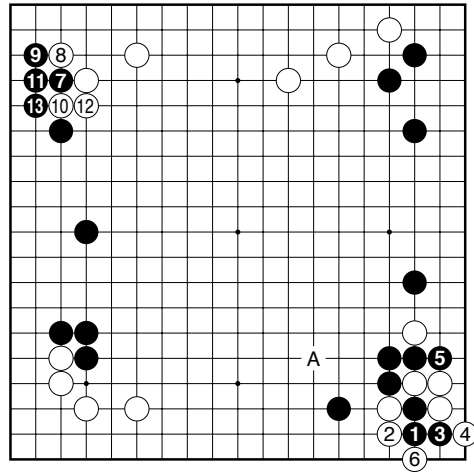


Diagram 22 (1-13)

White 6 joseki.... black might have to strengthen the outside later around A

Black 13 here the connection is ok, as black is stronger and wanteto connect his stones

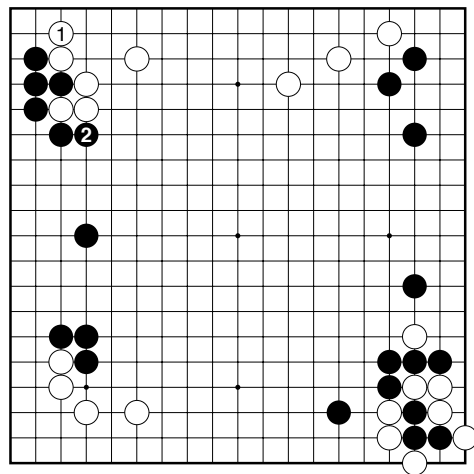


Diagram 23 (1-2)

