

(Black unknown) vs (White unknown)

(Date unknown)

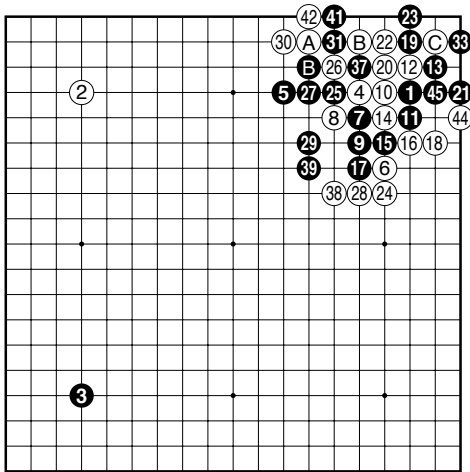


Figure 1 (1-45)

40 at 26, 43 at 37, 46 at 26

Black 11 tricky move

Black 31 White wants to play A, but black B kills him, so he has to play C first

White 34 now black A no longer works, so black plays B to start a ko fight

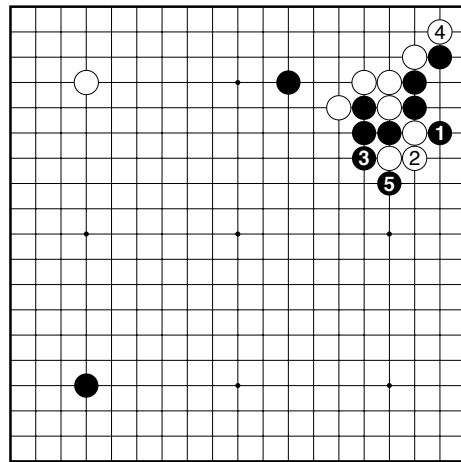


Diagram 2 (1-5)

White 4 only move...

Black 5 important

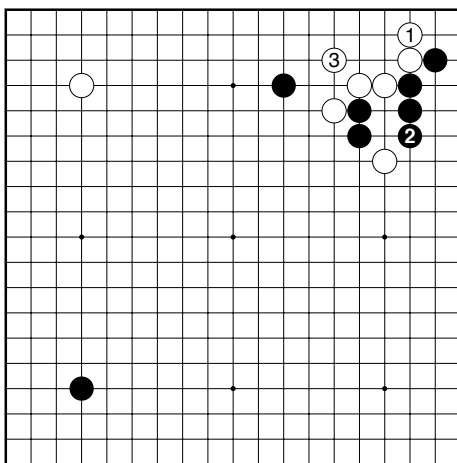


Diagram 1 (1-3)

White 3 this reverts back to the old joseki which is now considered a bit better for black

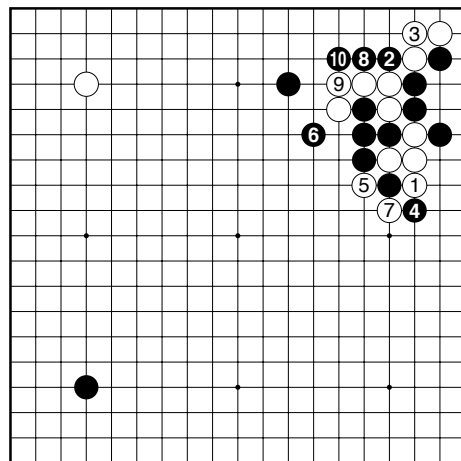


Diagram 3 (1-10)

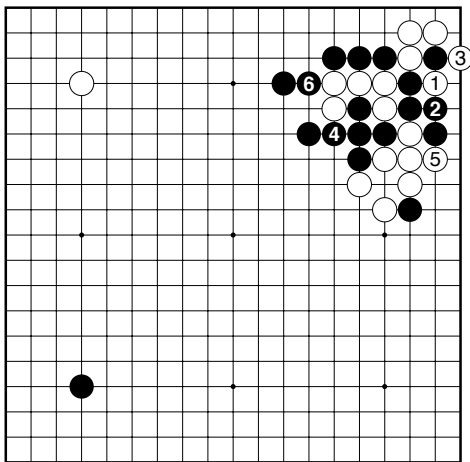


Diagram 4 (1-6)

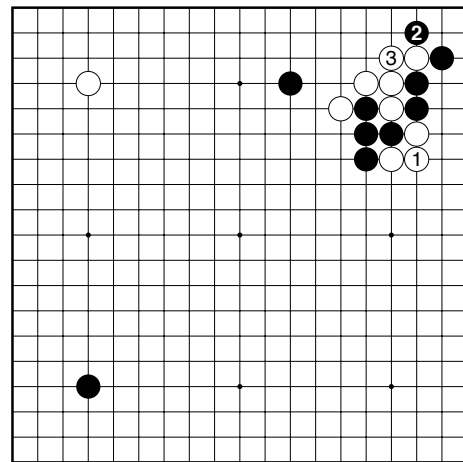


Diagram 7 (1-3)

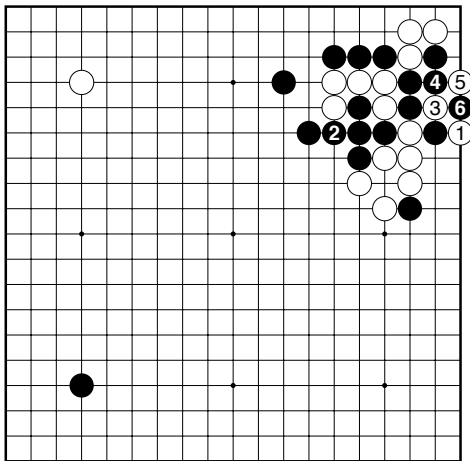


Diagram 5 (1-6)

Black 6 ko (but no ko threats in the opening)

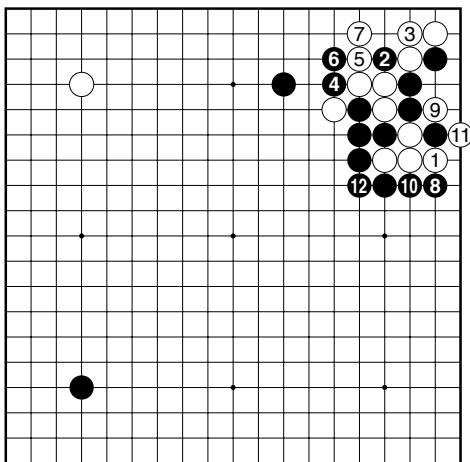


Diagram 6 (1-12)

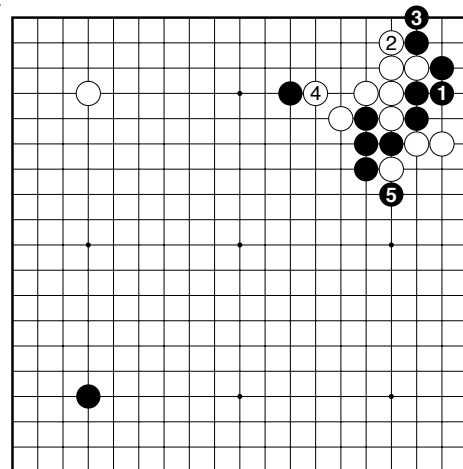


Diagram 8 (1-5)

Result: Unknown