

tag 2 tsumego formen, vs cho seokbin,

(Date unknown)

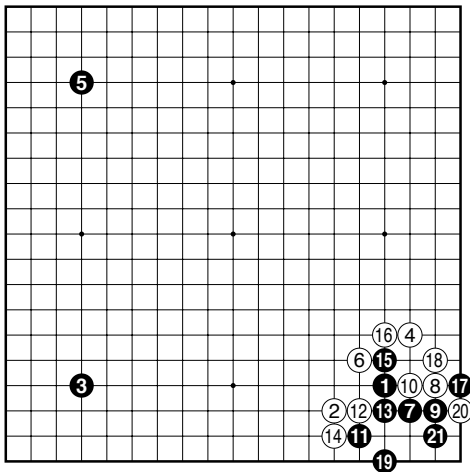


Figure 1 (1-21)

Black 17 ohne diesen hane stirbt schwarz

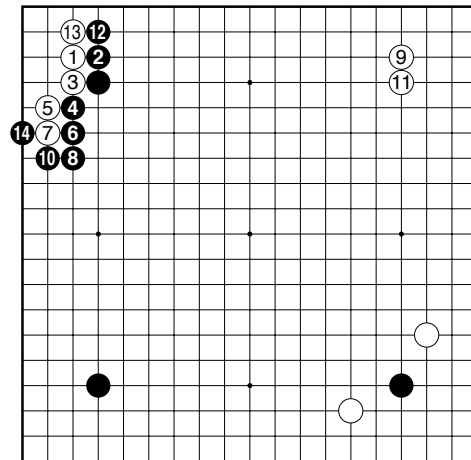


Diagram 2 (1-14)

White 9 tenuki1

Black 10 sente, wenn weiss nicht antwortet...

White 11 tenuki2

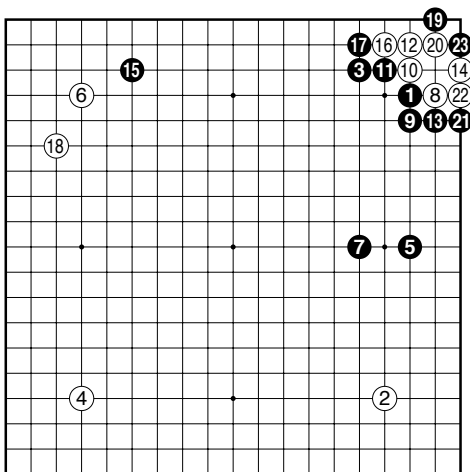


Diagram 1 (1-23)

White 16 fehler

Black 23 ko

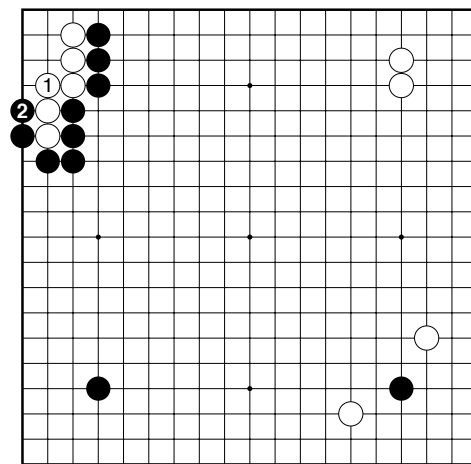


Diagram 3 (1-2)

Black 2 weiss tot

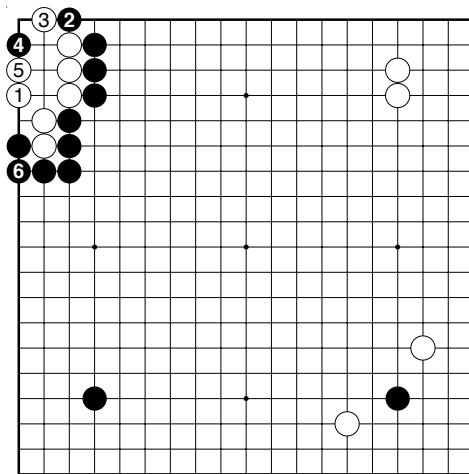


Diagram 4 (1-6)

Black 6 weiss tot

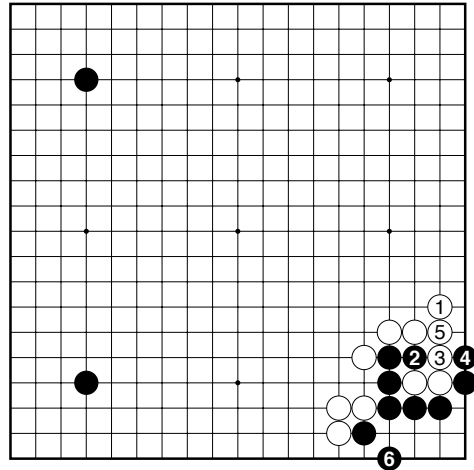


Diagram 5 (1-6)

Black 6 schwarz berlebt in der ecke trotz zweimal tenuki, das problem ist, dass weiss nach aussen sehr stark wird, darum normalerweise fr schwarz unvorteilhaft.

Result: Unknown